

HIGH-DEMAND ONLY

HIGH SCHOOL DIPLOMA OR EQUIVALENT AND SHORT-TERM TRAINING			
OCCUPATION (JOB TITLE)	ANNUAL OPENINGS	GROWTH (%)	WAGE RANGE
Amusement & Recreation Attendants	140	50.0	\$10–\$13
Animal Caretakers	55	38.5	\$12–\$14
Construction Laborers	165	5.8	\$18–\$23
Dishwashers	75	20.5	\$11–\$14
Fast Food & Counter Workers	680	16.7	\$12–\$14
Food Preparation Workers	105	15.1	\$13–\$16
Home Health & Personal Care Aides	270	22.0	\$13–\$15
Hosts & Hostesses, Rest., Lounge, & Coffee Shop	145	28.0	\$10–\$13
Hotel, Motel, & Resort Desk Clerks	85	36.8	\$13–\$15
Janitors & Cleaners, Except Housekeepers	190	12.3	\$14–\$18
Laborers & Freight, Stock & Material Movers	160	13.3	\$14–\$18
Landscaping & Groundskeeping Workers	285	17.0	\$15–\$21
Light Truck Drivers	125	24.4	\$15–\$28
Maids & Housekeeping Cleaners	205	23.3	\$12–\$16
Passenger Vehicle Drivers, Except Bus	100	14.1	\$14–\$21
Recreation Workers	60	21.2	\$14–\$19
Retail Salespersons	675	7.7	\$13–\$18
Social & Human Service Assistants	50	22.6	\$14–\$19
Stockers & Order Fillers	315	16.4	\$14–\$17
Waiters & Waitresses	520	23.9	\$11–\$23

Note: These lists include occupations that show a favorable mix of projected long-term job growth, projected annual job openings, and median wages. They do not necessarily reflect current hiring demand. Hourly wage represents the 25th to 75th percentiles.

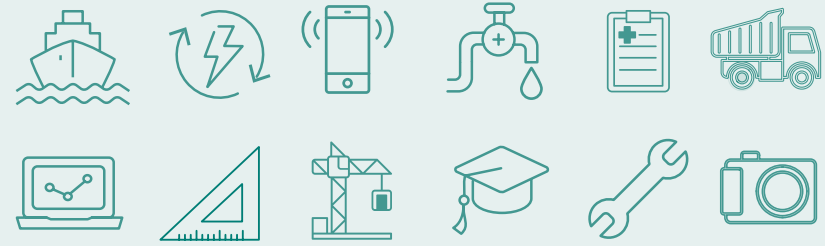
HIGH-DEMAND AND HIGH-WAGE

SCIENCE, TECHNOLOGY, ENGINEERING, AND MATHEMATICS (STEM)			
OCCUPATION (JOB TITLE)	ANNUAL OPENINGS	GROWTH (%)	WAGE RANGE
Architectural & Engineering Managers	10	10.0	\$47–\$65
Biological Techs	10	0.0	\$19–\$27
Computer & Information Systems Managers	10	8.3	\$40–\$63
Computer Network Support Specialists	5	0.0	\$23–\$31
Computer Systems Analysts	5	12.5	\$31–\$52
Computer User Support Specialists	20	7.7	\$19–\$29
Conservation Scientists	5	33.3	\$23–\$28
Electrical Engineering Technologists & Techs	5	0.0	\$29–\$38
Electrical Engineers	10	16.7	\$39–\$55
Environ. Scientists & Specialists, Including Health	15	16.7	\$29–\$39
Foresters	5	0.0	\$24–\$36
Industrial Engineering Technologists & Techs	5	0.0	\$21–\$30
Industrial Engineers	25	17.9	\$32–\$46
Mechanical Engineers	15	13.0	\$30–\$45
Network & Computer Systems Administrators	5	0.0	\$30–\$43
Sales Reps., Goods, Technical & Scientific	5	0.0	\$24–\$59
Software Developers & Quality Assurance Analysts	25	15.4	\$32–\$47
Surveying & Mapping Techs	10	14.3	\$20–\$29
Surveyors	5	20.0	\$28–\$41
Web Developers & Digital Interface Designers	5	12.5	\$18–\$32



NORTHWEST MICHIGAN

CAREER OUTLOOK THROUGH 2030



HIGH-DEMAND AND HIGH-WAGE

POSTSECONDARY CERTIFICATE OR MODERATE-TERM TRAINING			
OCCUPATION (JOB TITLE)	ANNUAL OPENINGS	GROWTH (%)	WAGE RANGE
Automotive Service Techs & Mechanics	60	1.6	\$16–\$24
Billing & Posting Clerks	40	8.6	\$18–\$21
Bookkeeping, Accounting, & Auditing Clerks	130	1.7	\$16–\$23
CNC Tool Programmers	5	33.3	\$24–\$31
Computer User Support Specialists	20	7.7	\$19–\$29
Ctrl. & Valve Install. & Repairers, Ex. Mech. Door	10	8.3	\$35–\$43
Dental Assistants	60	13.6	\$18–\$21
Emergency Medical Techs & Paramedics	25	18.8	\$17–\$23
First-Line Supervisors of Police & Detectives	10	14.3	\$30–\$41
Heavy & Tractor-Trailer Truck Drivers	205	13.0	\$21–\$25
Highway Maintenance Workers	20	21.4	\$22–\$23
Insurance Sales Agents	40	17.1	\$23–\$47
Licensed Practical & Licensed Vocational Nurses	55	11.9	\$23–\$28
Operating Engineers	50	6.8	\$23–\$27
Painters, Construction & Maintenance	35	5.6	\$19–\$23
Police & Sheriff's Patrol Officers	60	16.9	\$24–\$30
Public Safety Telecommunicators	10	25.0	\$19–\$24
Sales Reps., Goods, Nontechnical	115	9.7	\$20–\$40
Sales Reps., Services	50	10.5	\$19–\$35
Welders, Cutters, Solderers, & Brazers	50	9.8	\$18–\$22

HIGH-DEMAND AND HIGH-WAGE

ASSOCIATE DEGREE/LONG-TERM TRAINING/APPRENTICESHIPS			
OCCUPATION (JOB TITLE)	ANNUAL OPENINGS	GROWTH (%)	WAGE RANGE
Brickmasons & Blockmasons	10	12.5	\$23–\$29
Bus & Truck Mech. & Diesel Engine Specialists	25	16.7	\$21–\$27
Carpenters	90	-2.0	\$18–\$27
Court, Municipal, & License Clerks	70	16.1	\$17–\$23
Dental Hygienists	20	11.5	\$30–\$36
Diagnostic Medical Sonographers	10	10.0	\$29–\$37
Electrical Power-Line Installers & Repairers	15	0.0	\$40–\$53
Electricians	70	15.8	\$18–\$30
HVAC & Refrigeration Mechanics & Installers	25	9.1	\$18–\$28
Industrial Machinery Mechanics	55	20.0	\$22–\$31
Machinists	95	7.0	\$16–\$23
Magnetic Resonance Imaging Technologists	5	33.3	\$31–\$37
Mobile Heavy Equip. Mechanics, Except Engines	25	19.0	\$21–\$29
Paralegals & Legal Assistants	25	17.6	\$20–\$29
Physical Therapist Assistants	20	40.0	\$24–\$29
Plumbers, Pipefitters, & Steamfitters	35	10.0	\$18–\$29
Radiologic Technologists & Techs	20	8.3	\$26–\$36
Respiratory Therapists	5	20.0	\$29–\$34
Tool & Die Makers	10	0.0	\$23–\$32
Water & Wastewater Treatment Plant Operators	20	5.3	\$21–\$28

HIGH-DEMAND AND HIGH-WAGE

BACHELOR'S DEGREE OR HIGHER			
OCCUPATION (JOB TITLE)	ANNUAL OPENINGS	GROWTH (%)	WAGE RANGE
Accountants & Auditors	105	7.5	\$24–\$38
Administrative Services & Facilities Managers	15	20.0	\$30–\$50
Elementary School Teachers	75	7.8	\$23–\$36*
Financial Managers	25	23.1	\$38–\$65
General & Operations Managers	250	15.4	\$23–\$52
Healthcare Social Workers	25	16.7	\$22–\$30
Human Resources Specialists	45	13.2	\$22–\$37
Industrial Engineers	25	17.9	\$32–\$46
Lawyers	25	11.6	\$36–\$60
Legislators	35	19.4	\$20–\$37*
Market Research Analysts & Marketing Specialists	50	23.1	\$20–\$32
Medical & Health Services Managers	50	32.5	\$36–\$56
Nurse Practitioners	25	63.2	\$45–\$60
Physician Assistants	15	33.3	\$49–\$63
Project Management & Business Oper. Specialists	70	11.7	\$24–\$40
Registered Nurses	190	9.4	\$30–\$38
Secondary School Teachers	60	7.9	\$23–\$38*
Software Developers & Quality Assurance Analysts	25	15.4	\$32–\$47
Speech-Language Pathologists	25	18.5	\$35–\$45
Substance, Behavioral, & Mental Health Counselors	25	27.8	\$22–\$31

Source: Michigan Center for Data and Analytics, Michigan Department of Technology, Management & Budget



* These occupational wages are typically published as annual wages. To calculate hourly wages for these occupations, annual wages were divided by 2,080 hours.